



Webbs

Helping people move since 1994

Princess Court | Wolverhampton | WV10 0RL

£900 PCM



## Summary

Webbs Estate Agents are pleased to be able to offer for let this well presented first floor apartment, situated in a popular location, close to local amenities.

In brief the accommodation comprises of three bedrooms, kitchen/utility area, lounge/diner, family bathroom and balcony to rear.

Unfortunately pets and smokers will not be considered.

## Key Features

## Rooms and Dimensions

### PROPERTY DETAILS:

#### Lounge Diner

13'9" x 11'1" (4.21m x 3.38m)

#### Kitchen

9'7" x 8'6" (2.93m x 2.61m)

#### Utility / Rear Lobby with Storage

6'2" x 5'8" (1.88m x 1.73m)

#### Bedroom One

11'1" x 8'5" (3.40m x 2.58m)

#### Bedroom Two

11'1" x 6'7" (3.38m x 2.01m)

#### Bedroom Three

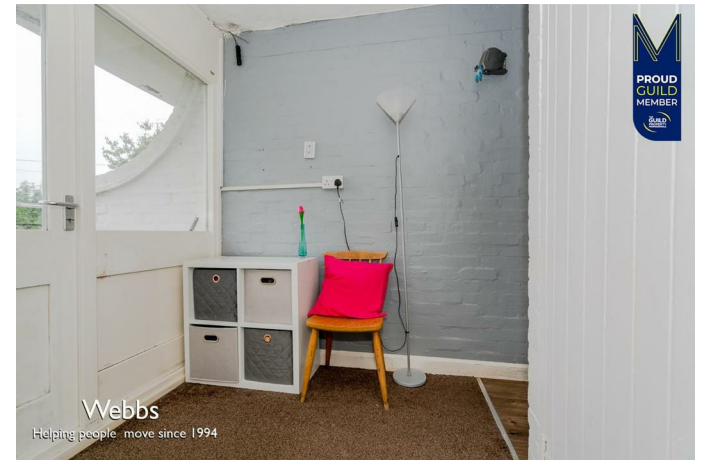
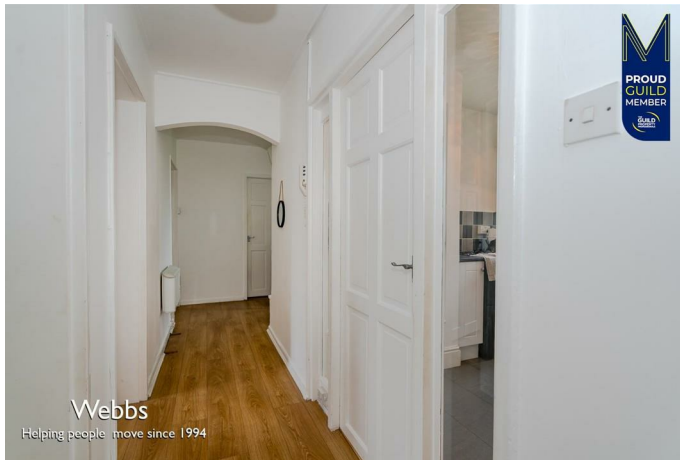
11'1" x 6'3" (3.38m x 1.93m)

#### Bathroom

5'5" x 4'9" (1.66m x 1.46m)

### TENANCY INFORMATION & IMPORTANT NOTES





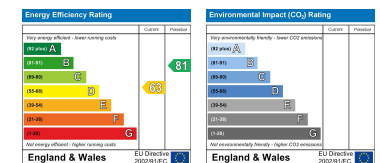
GROUND FLOOR  
729 sq.ft. (67.8 sq.m.) approx.



TOTAL FLOOR AREA - 729 sq.ft. (67.8 sq.m.) approx.

Whilst every attempt has been made to ensure the accuracy of the floorplan contained here, measurements of doors, windows, rooms and any other items are approximate and no responsibility is taken for any error, omission or misstatement. This plan is for illustrative purposes only and should be used as such by any prospective purchaser. The services, systems and appliances shown have not been tested and no guarantee as to their operability or efficiency can be given.  
Made with Metropix ©2021

Webbs Estate Agents - endeavour to maintain accurate depictions of properties in Virtual Tours, Floor Plans and descriptions, however, these are intended only as a guide and purchasers must satisfy themselves by personal inspection.



153 Avon Road, Cannock, WS11 1LF

Tel: 01543 468846 | Email: [sales@webbestateagents.co.uk](mailto:sales@webbestateagents.co.uk) | [www.webbestateagents.co.uk](http://www.webbestateagents.co.uk)

**Webbs**  
estate agents